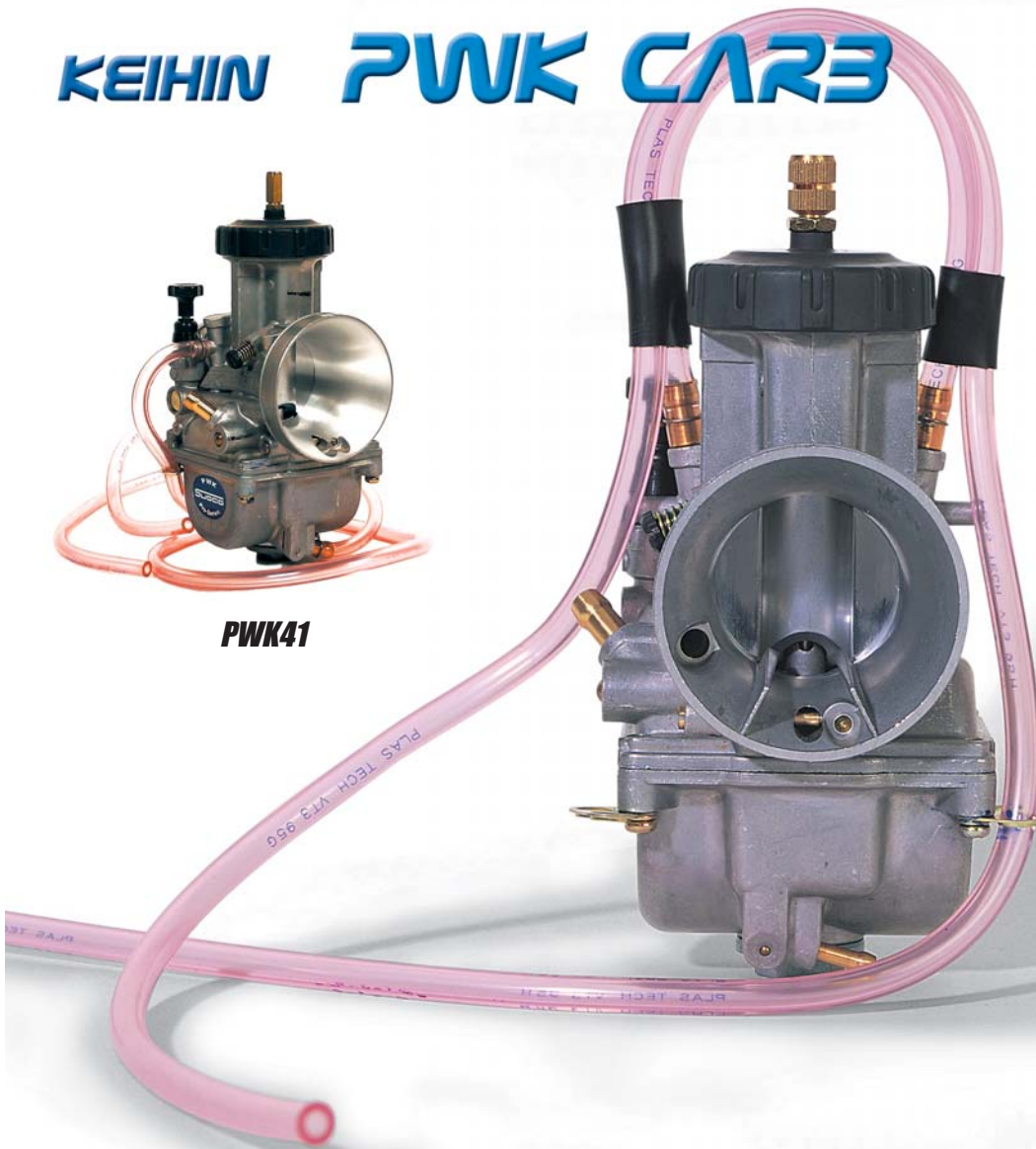


KEIHIN PWK CARB



PWK41



The Keihin PWK "Air Striker" Motocross racing carburetor is refined to perfection and has set the standard among motocross racing carburetors. With its new features the PWK will continue to be the first choice in performance carbs for your 125, 250, Enduro or ATV. PWK Air Striker Carbs are available in two popular sizes to cover all your horsepower requirements.

Standard PWK

Description/Mark*	Standard Jetting	Special Set
PWK28/ 29S"	016-144	016-189
PWK33/ S46"	016-148	016-191
PWK35/ 70R"	016-150	016-192
PWK35 A.S. / S65"	016-160	016-197
PWK36/ S63"	016-163	016-198
PWK38/ 71R"	016-153	016-194
PWK38 A.S. / S66"	016-167	016-199
PWK39/ 72R"	016-155	016-195
PWK41 Pro-Series	016-156	

Please Note: Special Set carbs are pre jetted to your request or specific application. Please specify exact jetting details or bike application for each special set carb you want to order.

Note:
 **"X00" represents product code stamped on the carb body just above the float bowl.
 A.S. = Air Striker carb

Standard Jetting

	Slow Jet	Thr. Valve	Jet Needle	Main Jet
PWK28/ 29S"	#38	3.5	46-JJH	#135
PWK33/ S46"	#52	6	48-CGL	#165
PWK35/ 70R"	#68	6	48-DGK	#160
PWK35 A.S. / S65"	#48	4.5	48-DEK	#160
PWK36/ S63"	#55	5	48-DGJ	#165
PWK38/ 71R"	#58	6	48-DEG	#172
PWK38 A.S. / S66"	#55	7	48-DDJ	#170
PWK39/ 72R"	#60	6	48-DGH	#160
PWK41 Pro-Series	#60	6	48-DGH	#160

KEIHIN PWK28 PARTS

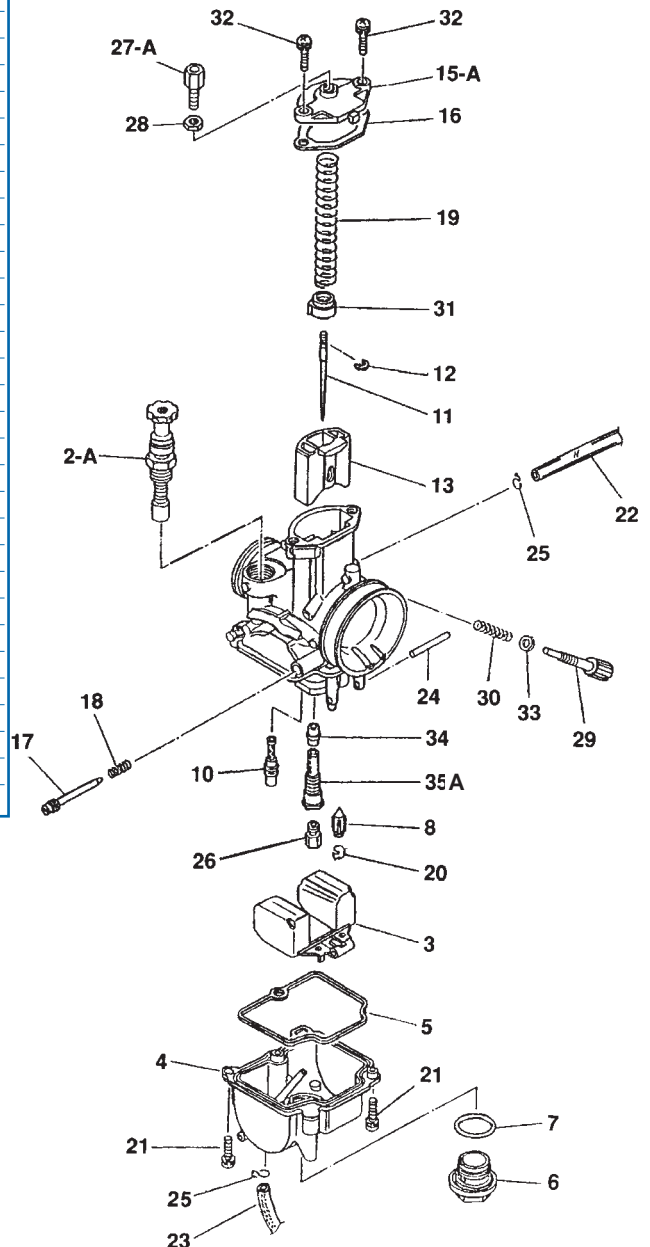
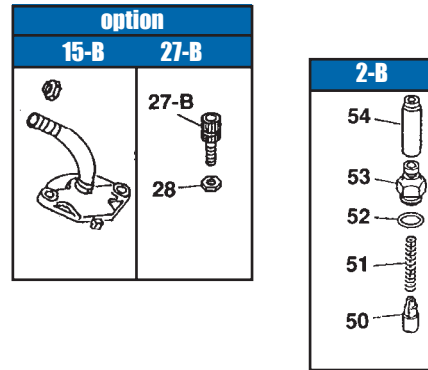
No	Description	Keihin No.	Order #
2A	Starter Valve Comp.	1166-818-2100	018-500
2B	Starter Valve Comp.	See Asterisked No.	
3	Float	W1310-080-9901	018-397
4	Float Bowl Comp.	N350-03A00	018-575
5	Gasket, Float Bowl	W1354-042-9900	018-406
6	Plug Screw	16162-ND4-7511-M1	018-128
7	O-Ring, PLug Screw	16173-001-0040	018-664
8	Float Valve Com	W1362-020-9901	018-389
10	Slow Jet	N424-21- α α α	See pg. 207
11	Jet Needle	N427-46- α α α	see pg. 205
12	Clip, Jet Needle	16115-169-0040	018-033
13	Throttle Valve	N502-11x00 3.5	018-582
	Throttle Valve, Chrome	N502-52H00 3.5	Chart below
15A	Top	1030-844-2000	021-575
15B	Top (option)	1030-843-2200	018-586
16	Gasket, Top	1202-837-2000	018-566
17	Air Adjust Screw	W1446-231-9900	018-089
18	Spring, Air Adjust	W1711-416-9900	018-090
19	Spring, Throttle	1290-921-2000	018-532
20	Clip, Float Valve	0405-013-1000	021-576
21	Screw, Float Bowl	N114-04160	021-577
22	Bowl, Vent Pipe	W9404-40090	021-578
23	Overflow Pipe	95003-07042-31	021-579
24	Float Pin	W9525-25250	018-670
25	Clip	W9535-35000	018-098
26	Main Jet	99101-357- α α α	See pg. 206
26A	Main Jet (SDGAA)	99101-393- α α α	See pg. 206
27A	Cable Adjuster	W9581-59250	018-005
27B	Cable Adjuster	1036-804-2000	018-542
28	Nut, Cable Adjuster	W1793-130-9900	018-008
29	Idle Adjuster	1034-831-2000	018-568
29	Idle Adjuster (for Chrome Slides)	1034-853-2000	018-569
30	Spring	1290-923-2000	018-562
30	Spring (for Chrome Slides)	1290-963-2000	018-574
31	Collar, Th. Spring	1022-805-7000	018-564
32	Screw	Top N114-04140	021-580
33	Washer	0301-078-1200	021-101
34	Needle Jet	16164-169-0040	018-560
35	Needle Jet Holder (SDGAA)	N413-11A00	N/A
35A	Needle Jet Holder	N413-12A00	021-581
*50	Starter Valve	W1275-028-9901	021-512
*51	Spring	1290-922-2000	021-582
*52	O-Ring	0901-069-6000	021-527
*53	Cable Holder	W1551-140-9900	021-583
*54	Cap	16118-166-0040	018-002

NOTE: Ask dealer for details if you see α α α on part numbers.

If you see "SDGAA" on your carburetor's stamped portion, your main jet and needle jet holder have to be 26A and 35.

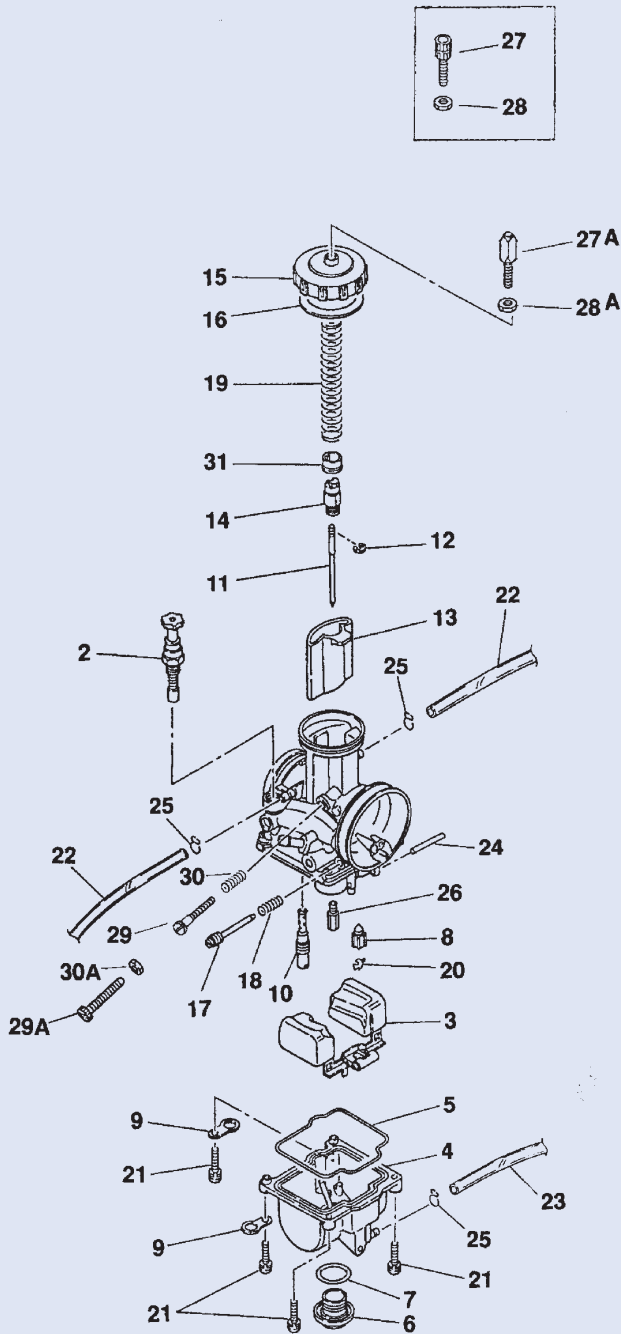
Throttle Valve (chrome) Chart

Cutaway Mark	Order No.	Keihin No.
1.0	018-584	N502-52B00
2.0	018-585	N502-52C00
3.0	018-586	N502-52D00
3.5 (STD)	018-590	N502-52H00
4.0	018-587	N502-52E00
5.0	018-588	N502-52F00
6.0	018-589	N502-52H00



KEIHIN PWK PARTS

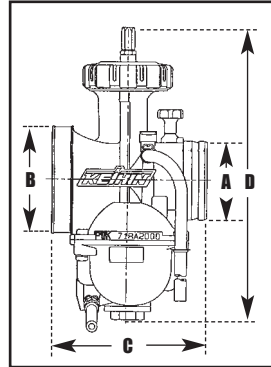
PWK 33, 35, 36, 38, 39



NOTE: Do not remove parts that are not shown on this exploded view.

Rebuild Kit For:

PWK 28 Motorcycle Carb	Order No. 020-112
PWK 35-39 Motorcycle Carb	020-110
PWK 39 Snowmobile Carb	020-111

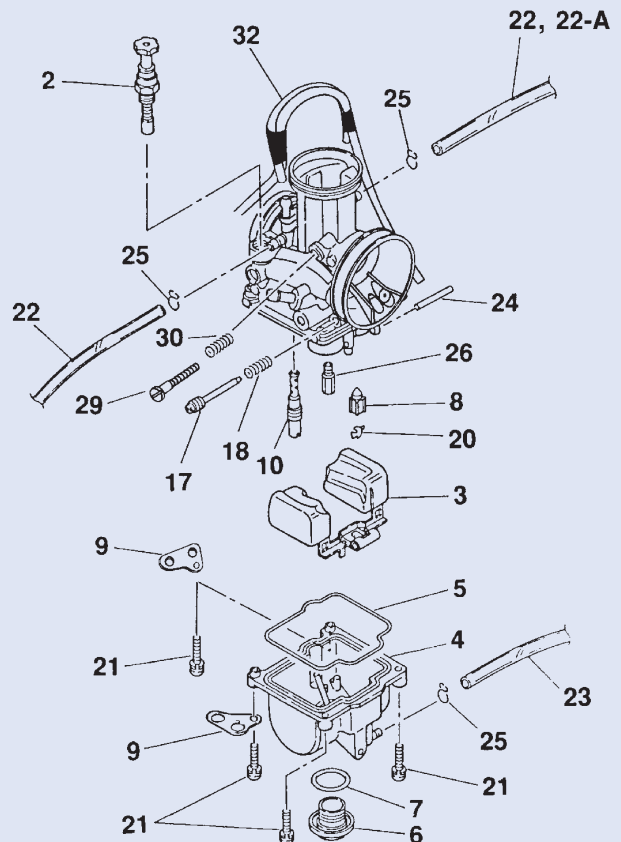


PWK Carburetor Dimensions

SIZE (MM)	A	B	C	D
PWK 33MM				
PWK 35MM	42	59	91	163.3
PWK 36MM				
PWK 38MM	46	63	91	171.6
PWK 39MM	46	63	91	171.6
PWK 28MM	35	49	83	147.4

Quad Vents / Air Strikers

*see part numbers 11, 12, 14, 15, 16, 19, 27, 28, 31 from next drawing.



NOTE: Do not remove parts that are not shown on this exploded view.

Description	PWK33	PWK35	PWK36 Quad Vent	PWK38&39	PWK35 Air Striker	PWK38 Air Striker
2 Starter Valve Comp	018-500		←	←	←	←
3 Float	018-110	←	←	←	←	←
4 Float Bowl Comp	018-502	←	←	←	←	←
5 Gasket Float Bowl*	018-113	←	←	←	←	←
6 Plug Screw	018-128	←	←	←	←	←
7 O-Ring Plug Screw	018-664	←	←	←	←	←
8 Float Valve Comp*	018-504	←	←	←	←	←
9 Anchor Plate	018-506	←	018-505	018-506	018-505	←
10 Slow Jet	N424-21- η η η	(See pg. 207)	←	←	←	←
11 Jet Needle	N427-48- η η η	(See pg. 204)	←	←	←	←
12 Clip, Jet Needle*	018-033	←	←	←	←	←
13 Throttle Valve (chart below)	N502-15- η η η	N502-16x00	N502-17x00	N502-17x00	N502-15X00	N502-17x00
14 Cable Holder	018-526	←	←	←	←	←
15 Top	018-528	←	←	←	←	←
16 Gasket*	018-016	←	←	←	←	←
17 Air Adjust Screw*	018-089	←	←	←	←	←
18 Spring*	018-090	←	←	←	←	←
19 Spring Throttle	018-530	←	018-530	018-531	018-530	018-531
20 Clip, Float Valve*	018-674	←	←	←	←	←
21 Screw, Float Bowl*	018-122	←	←	←	←	←
22 Bowl Vent Pipe	018-534	←	←	018-535	←	←
22a Bowl Vent Pipe	NA	NA	018-535	NA	NA	NA
23 Overflow Pipe	018-538	←	←	←	←	←
24 Float Pin	018-670	←	←	←	←	←
25 Clip	018-098	←	←	←	←	←
26 Main Jet	99101-357- η η η	(See pg. 206)	←	←	←	←
27 Cable Adjuster	018-542	←	←	←	←	←
27a Cable Adjuster	018-005	(25mm)	←	←	←	←
27b Cable Adjuster	018-306	(20mm)	←	←	←	←
28 Nut Cable Adjuster	018-544	←	←	←	←	←
28a Nut Cable Adjuster	018-008	←	←	←	←	←
29 Idle Adjuster (Plastic)	018-569	←	←	←	←	←
29a Idle Adjuster (Brass)	NA	018-546	NA	018-546	NA	NA
30 Spring	018-574	←	←	←	←	←
30a Nut	NA	018-548	NA	018-548	NA	NA
31 Collar*	018-550	←	←	←	←	←
32 Bowl Vent Pipe Comp (For Quad Vent)	NA	NA	018-537	NA	018-537	018-537
O-Ring, Jet Block	NA	021-532	←	←	←	←

*These parts are included in PWK rebuild kit.

PWK THROTTLE VALVE CHART						
Cutaway Mark	PWK33	PWK35	PWK36 - Q/V	PWK38&39	PWK35 - A/S	PWK38 - A/S
Rich 0		018-508	018-517	018-517		018-517
3.0		018-509	018-518	018-518		018-518
4.0		018-510	018-519	018-519		018-519
4.5	018-240				018-240	
5.0	018-241	018-511	018-520	018-520	018-241	018-520
5.5	018-242				018-242	
6.0	018-243	018-512	018-521	018-521	018-243	018-521
6.5	018-244				018-244	
7.0	018-245	018-513	018-522	018-522	018-245	018-522
8.0			018-523	018-523		018-523
8.5		018-514				
9.0			018-524	018-524		018-524
Lean 9.5		018-515				